



M94SE

Fat Sugar™ Drive

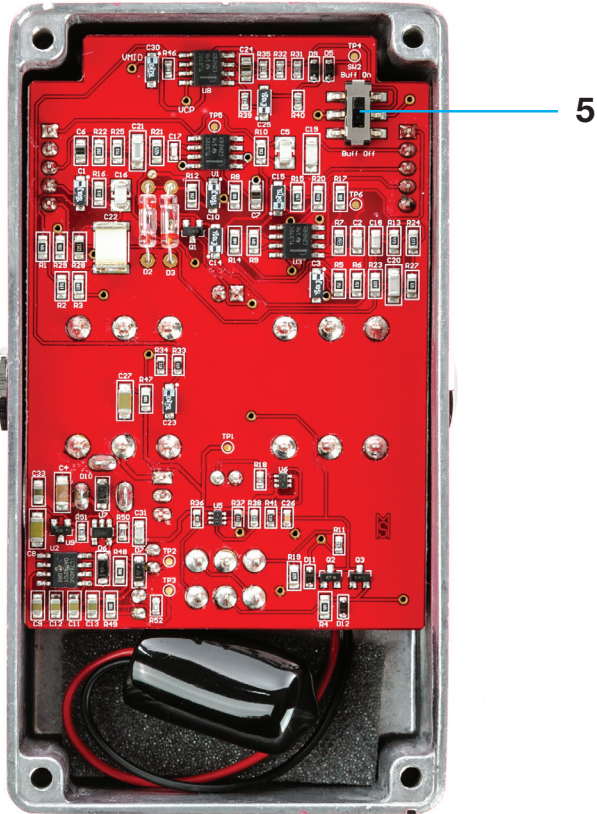
The MXR Fat Sugar Drive brings the Sugar Drive's diverse range of clear and transparent overdrive tones to MXR's classic housing for players who prefer its footprint over that of the mini.

External Controls



- 1 VOLUME knob sets overall effect volume
- 2 TONE knob rolls off high frequencies
- 3 DRIVE knob sets the amount of overdrive
- 4 FOOTSWITCH toggles effect on/bypass (red LED indicates on)

Internal Controls



5 BUFFER switch engages buffered bypass

Basic Operation

Power

The MXR® Fat Sugar Drive™ Pedal is powered by one 9-volt battery (remove bottom plate to install), the Dunlop ECB003 9-volt adapter, or an MXR® Brick™ Series power supply.

Directions

1. Run a cable from your guitar to the M94SE's INPUT jack and run another cable from the M94SE's OUTPUT jack to your amplifier.
2. Start with all controls at 12 o'clock.
3. Turn the effect on by depressing the FOOTSWITCH.
4. Rotate the VOLUME knob clockwise to increase the overall effect volume or counterclockwise to decrease it.
5. Rotate the TONE knob clockwise for a brighter sound or counterclockwise for a warmer sound.
6. Rotate the DRIVE knob clockwise to increase amount of overdrive or counterclockwise to decrease it.
7. By default, The M94SE is set to true bypass switching. For buffered bypass switching, remove bottom plate and set the BUFFER switch to its UP position.

Specifications

Input Impedance	600 k Ω
Output Impedance	3 k Ω
Nominal Input Level	+6 dBV
Maximum Output Level True Bypass without Buffer selected	+26 dBV
Tone control (@ full CCW):	-20 dB @ 3 kHz
Current Draw	18.5 mA @ 9 VDC
Power Requirements	9 VDC (ECB003 AC adapter)
Throughput Gain	up to +50 dB @ 1kHz

All measurements made at 1 kHz, speed at mid position.